



# GMT MONTHLY MEMBERSHIP PROGRESS REPORT

Results as of: 10/31/2017

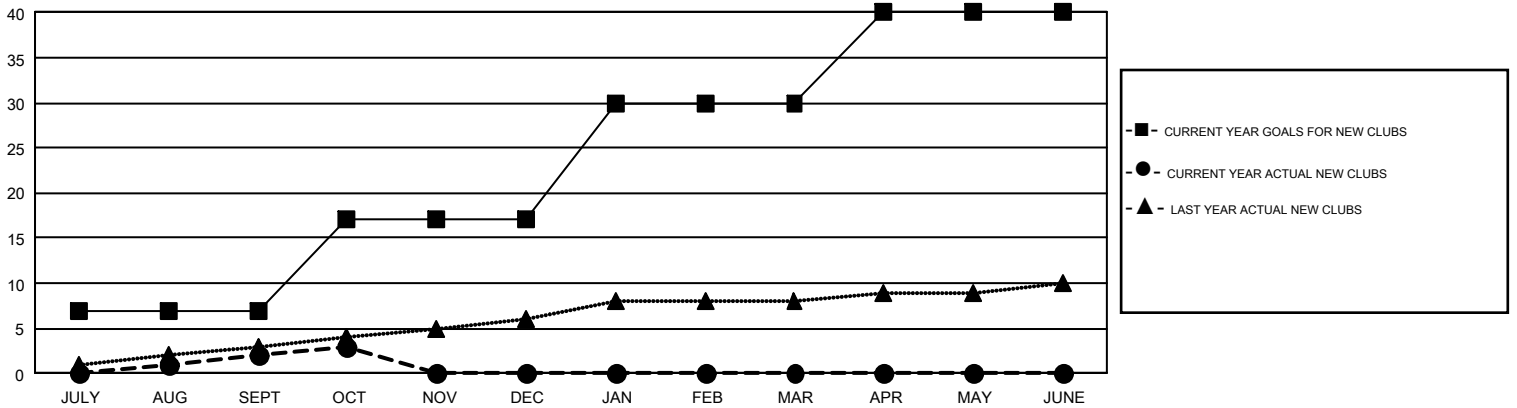
## GMT Constitutional Area 1, Group D

GMT: MICHAEL MOLEND A

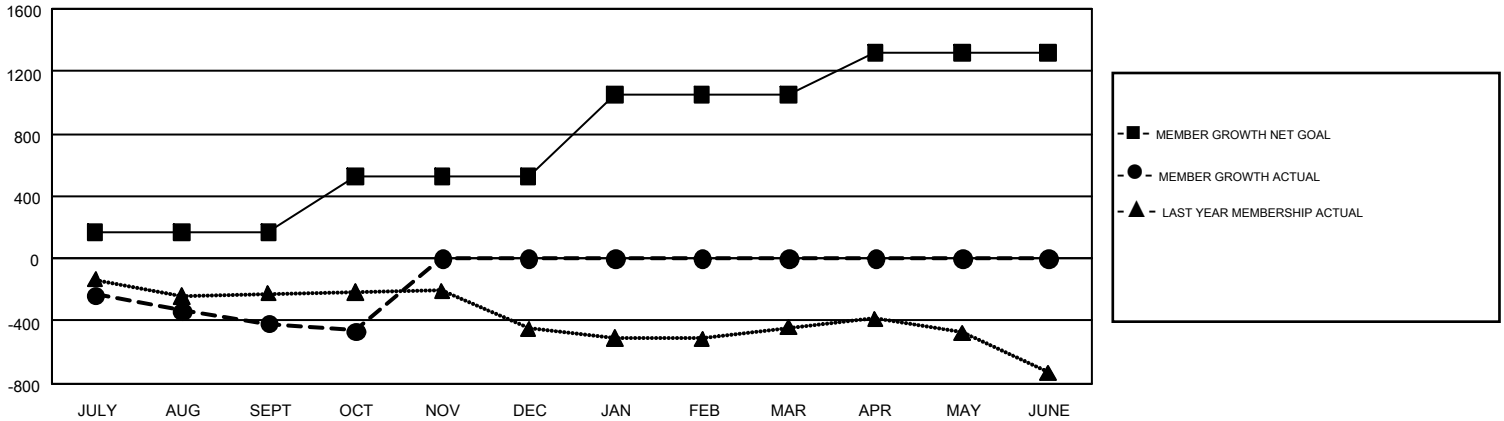
REPORT DOES NOT INCLUDE CLUBS IN UNDISTRICTED AREAS.

Clubs				Members			
RESULTS FOR 2017-2018				RESULTS FOR 2017-2018			
QUARTER	NEW CLUB GOAL	NEW CLUBS	DROPPED CLUBS	QUARTER	MEMBER GROWTH NET GOAL	MEMBER GROWTH ACTUAL	DROPPED MEMBERS ACTUAL (including transfers)
JULY/AUG/SEPT	7	2	5	JULY/AUG/SEPT	169	954	1,243
OCT/NOV/DEC	10	1	3	OCT/NOV/DEC	355	418	432
JAN/FEB/MAR	13	0	0	JAN/FEB/MAR	528	0	0
APR/MAY/JUNE	10	0	0	APR/MAY/JUNE	266	0	0

GOALS AND ACTUAL NEW CLUBS CUMULATIVE



GOALS AND ACTUAL MEMBERS CUMULATIVE



DROPPED CLUBS: 8	522 CLUBS OF 1,530 ADDED 1 OR MORE NEW MEMBERS	<b>GENDER DISTRIBUTION</b> MALE 35,883 (74.56%) FEMALE 12,241 (25.44%)
<b>DROPPED MEMBERS</b> DECEASED 229 CLUB CANCELLED 20 OTHER 1,426 <b>TOTAL 1,675</b>	<a href="#">CLICK HERE FOR CUMULATIVE MEMBERSHIP DATA</a>	TOTAL FAMILY UNIT MEMBERS 9,279 FAMILY MEMBERS PAYING HALF DUES 4,707